

WJA 8.0 SP2 Muratec package installation instructions

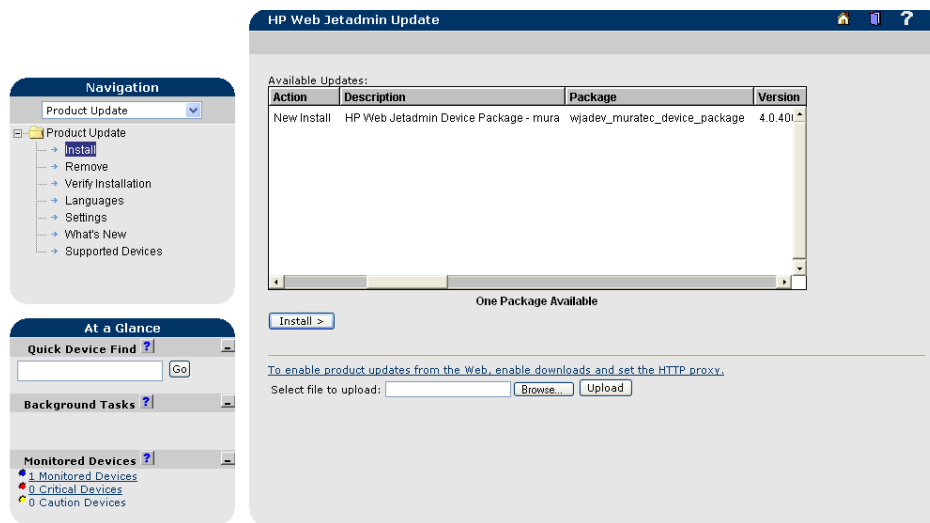
Note: The package is named wjadev_muratec_devices.fpm and it contains the following plug-in packages:

wjadev_muratec.fpm

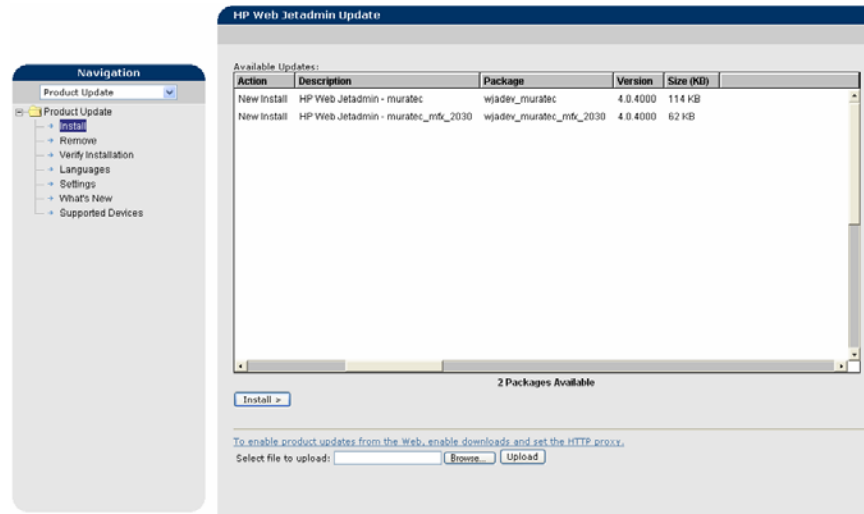
wjadev_muratec_mfx_2030.fpm

Installation Steps:

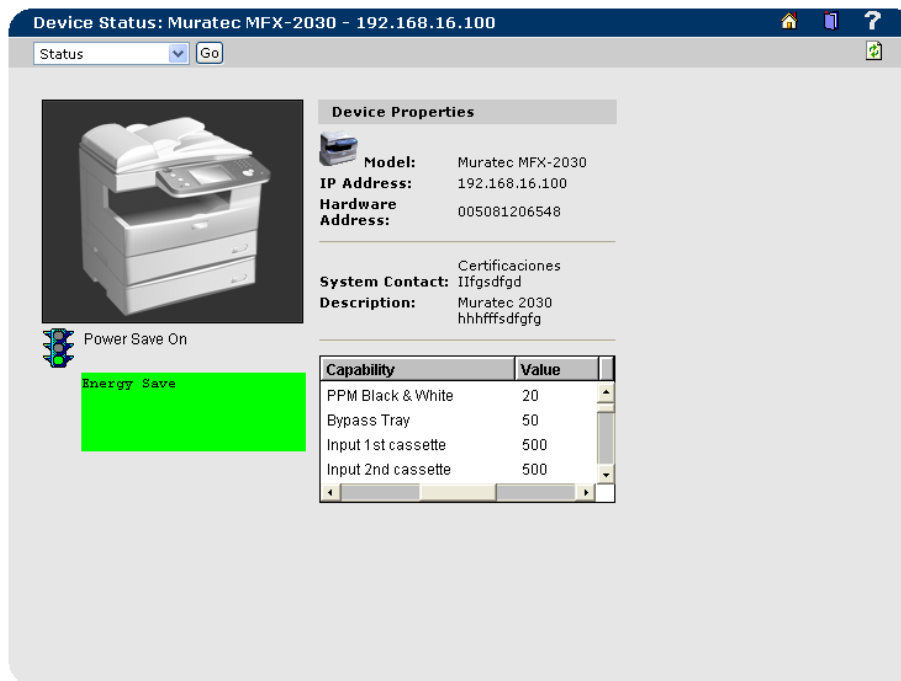
1. Download wjadev_muratec_devices_5_30_2006.zip file into a temp directory. The file is located in the HP Certifications site into muratec mfx-2030 plug-in.
2. Extract wjadev_muratec_devices.fpm file.
3. Start HP Web Jetadmin
4. Select the **Product Update** in the left menu tree inside the **Navigation** area.
5. Click **Install**
6. Browse the fpm package that should be located in your temp directory
7. Click the **Upload** button
8. The **Available Updates** list must show the “New Install HP Web Jetadmin Device Package – Muratec” message. Select it and click the **Install** button



9. You should see a “Success one package installed” message reporting the operations result.
10. Go to **Product Update - > Install** in the left menu tree of the Navigation area
11. The **Available Updates** list must show the Muratec packages available to be installed
12. Select all the packages and click the **Install** button



13. You should see a message at the bottom of the list the number of packages installed
14. Use the **Quick Device Find** option to browse in the Network Muratec printers with the model of the installed plug-ins.



Steps to Uninstall

To uninstall the package please do the following:

1. Select the **Product Update** in the left menu tree inside the **Navigation** area.
2. Choose the **Remove** option
3. Search in the **Installed Packages** list the packages to uninstall and selected.



4. Once the packages are selected, click the **Uninstall Packages** button
5. It will show a window with the plug-ins to be uninstalled. Click the **Next** button
6. You will see a message to inform that the packages were successfully removed

The screenshot displays the HP Web Jetadmin Update interface. On the left, there are three panels: 'Navigation' with a 'Product Update' dropdown menu, 'At a Glance' with a 'Quick Device Find' search bar containing '192.168.16.110' and a 'Go' button, and 'Monitored Devices' showing 0 Critical and 0 Caution devices. The main area is titled 'HP Web Jetadmin Update' and shows a table of 'Installed Packages' with 355 packages installed. The table has columns for Description, Package, Version, and Path. Two packages are highlighted in blue:

Description	Package	Version	Path
HP Web Jetadmin - muratec	wjadev_muratec	4.0.4000	
HP Web Jetadmin - muratec_mfx_2030	wjadev_muratec_mfx_2030	4.0.4000	

Below the table, there are two buttons: 'Uninstall Packages' and 'Remove Selected Patches'.